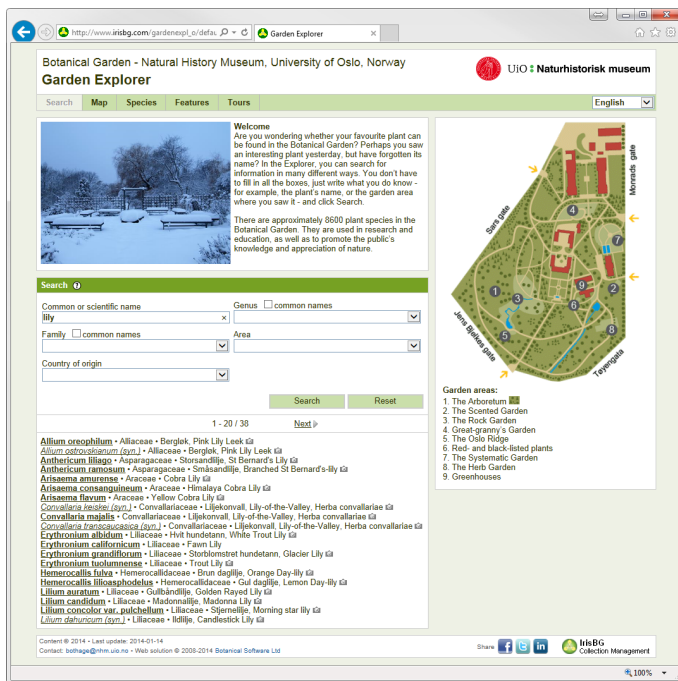


Garden Explorer Product Sheet



Overview

*Garden Explorer*TM is a web-based search and presentation module for garden collections. This module can be accessed by the public using a web browser on a PC, tablet computer or Smartphone. It can also be used as a kiosk-solution in the garden. IrisBG Garden Explorer has been tested on the most widely used web browsers and does not rely on additional installation of browser plugins.



User Experience

Here are some of the key aspects of the Garden Explorer user experience.

- You can enhance the visitor experience by using QR Coded plant labels. The visitor can scan the QR code with a smartphone and Garden Explorer will show details about the taxon and other relevant information.
- Support for GPS enabled smartphones. Visitors with a GPS enabled smartphone such as iPhone or Android can pinpoint their location on the map, making it easier to find their way around in the garden.
- Multiple search criteria are supported, such as the scientific or common names of plants, plant family, location in the garden, country of collection and distribution.
- For each taxon, information about family, distribution and flowering period is given.
- The locations of a taxon in the garden are shown both on a map and in a list.
- All garden features are displayed on the garden map and users can search for features by name and/or by type.
- When a "Garden Tour" is displayed, each point in the tour is described with text and photo and also shown on the garden map.
- For each location, both pictures and a description of the area can be viewed.
- The user interface language will adapt to the browser language of the user, or can be changed manually by the user. Currently we support English (default), French, German, Dutch, Hebrew and Norwegian. New languages will be added upon request.



Key features

By using a PC, Tablet or Smartphone, the visitor can:

- Search for Plants.
- Explore the plant collection using the Garden Map.
- Search for Garden Features (statues, ponds, memorial benches, etc.).
- Display Garden Tours, including a map of a selected tour.
- Explore the plant collection by species names.

Key Design Goals

IrisBG Garden Explorer has been designed with 3 key aspects in mind:

- **Usability** - A person without a GIS or Computer background is able to use the Garden Explorer without difficulties.
- **Performance** - The module is designed to perform well, even under low bandwidth conditions.
- **Flexibility** - IrisBG *Garden Explorer* will adapt to the size and capabilities of the visitors web browser including scaling of size, touch screen support, GPS integration and selection of preferred language.

Ginkgoaceae

Maidenhair Tree
Ginkgo biloba

1970-1671/1

China



Social media integration

Garden Explorer is delivered with social media buttons for visitors to share their experience with friends. Each taxa has a unique and stable web address (URL) which ensures that shared links are available for as long as any plant of that species is available in the garden.



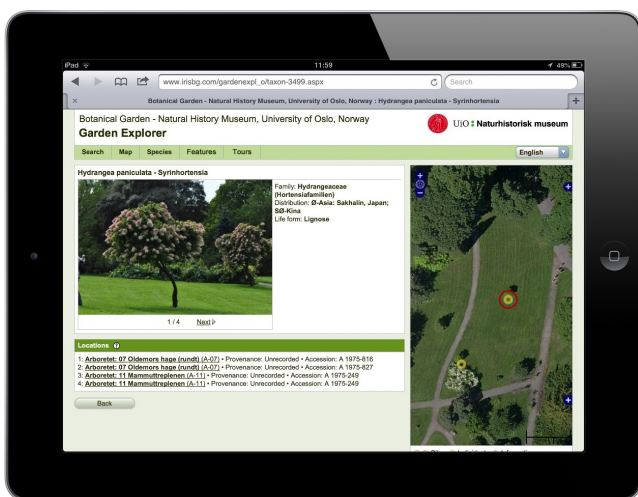
Garden Explorer is also a very powerful tool for boosting engagement with your visitors. Below is a cutting from a Facebook comment made by a visitor after having tried Garden Explorer.

Visitor to the garden This is incredible! The map feature using google earth is wonderful. I absolutely love coming to the garden and now I have the names of the plants at my fingertips as well. Kudos to everyone that had a hand in creating this project. Now I'm even more anxious to come visit! 😊
Like · Reply · 9 · Yesterday at 15:56

QR Code support in IrisBG

Below, we have described a classic scenario using QR Codes with IrisBG.

1. The garden staff will prepare the plant records in IrisBG. At this stage, you may consider adding links from the taxa information to other web resources such as Wikipedia.
2. The garden staff updates the internet Garden Explorer with the latest data. At this stage QR Code web references are automatically updated to all relevant taxa in your plant collection.
3. Labels with QR Codes are produced and placed out in the garden.
4. Visitors can now scan the QR Code. The smartphone will navigate directly to the Garden Explorer page for the relevant taxon.
 - a. The visitor can see details and photos of the taxon.
 - b. He/she can read more in depth articles available from other web resources where available.
 - c. The visitor can be informed that this plant is for sale in the garden shop.



Technical features

Here are some of the key technical features of IrisBG Garden Explorer.

- The Garden Explorer is designed to work on desktop browser, tablets as well as on modern smartphones such as iPhone and Android.
- High performance.
- The Garden Explorer content is designed to be indexed by internet search engines. This will enable visitors to find the plants in your collection using search engines such as Google and Bing.
- The appearance of the user interface can easily be configured to appear as an integral part of your own website.
- The solution is fully integrated with IrisBG for simple data management and uploading data through a web service.

A wide range of map types are supported by IrisBG Garden Explorer. These include:

- Your own maps (hosted on a VMS server).
- Maps supplied by internet map providers such as Bing, Google and OpenStreetMap.
- Georeferenced illustrations and drawings.

Architecture and requirements

The *Garden Explorer* module is built with Microsoft ASP.NET 2.0 and Ajax. The solutions is tested on Microsoft Internet Information Services. Support for other ASP.Net compatible web server platforms may be introduced upon request.

More information

www.irisbg.com

info@irisbg.com

+44 (0)1761 479350

Botanical Software Ltd

9 Priston, Bath, BA2 9EB, UK