

Standard Package

Product Sheet

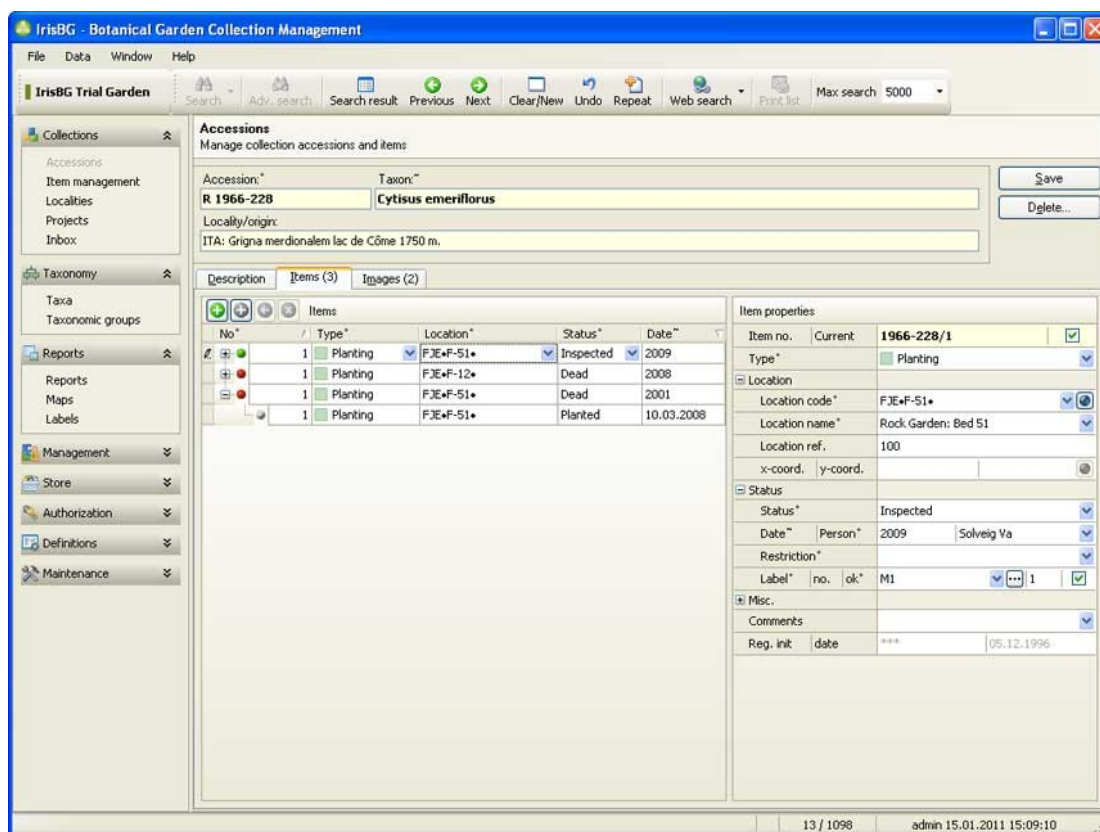


Overview

The IrisBG *Standard Package* consists of a number of components. These provide all the functionality that is necessary for effective collection management.

Collection Management

- Manages your accessions with information such as taxon, origin, locality, collector, determination history, material type, IPEN-number, images etc.
- For the items related to an accession (e.g. plants, herbarium specimen), information such as location in the garden, cultivation status, label type, map coordinates, etc., can be given.
- A history of changes for an accession item is automatically maintained.
- Data can be imported by using the optional Data Import module.
- Changes made to accessions using the optional IrisBG Mobile on a portable device can be assessed in the inbox before committing the changes to the database.
- Item management allows you to perform updates on a selection of accession items (e.g. plants, herbarium specimen).
- With integrated web search you can look up detailed information about a taxa from your favourite websites.



Taxonomy

- Manage taxa definition and nomenclature, including changes in taxonomic status.
- Includes data about systematic rank, scientific and vernacular names, synonyms, authors, parentage, distribution, habitat, literature, images, etc.
- Contains an overview of accessions and items of a given taxon in addition to publications and web references.
- Manage Taxonomic Groups above species level (e.g. genera, families).

IrisBG

IrisBG is a complete botanical collection management solution for Botanical Gardens and Large Estates. IrisBG manages a comprehensive set of botanical collection data, including plant history and related information such as taxa with synonyms, authors, images, collectors, contacts, etc. The software package is based on the latest developments in information technology. It is easy to use, install and maintain.

Reports

- Various reports can be created based on flexible selection criteria.
- The reports can be previewed, printed or exported to various file formats, such as doc, xls, csv, pdf or html.
- Data can also be exported in defined formats such as the Garden Search Database format (see BGCI) and the Darwin Core 2 format.

Labels

- Labels for use in the garden can be created by using Word mail merge or the data can be exported for later import into an external label printing program.

Easy to use

Single and multiple collections **Maps** Regular updates

Customizable

Flexible reports Training

Comprehensive records management **Visitors Web Access**

Customer support

Data entry in any language

Value for money **Data Transfer** Single and multiple sites

Established product **Mobile**

Optional modules

- *Garden Explorer* – Publish your garden on the internet.
- *IrisBG mobile* – Update your collection in the field on a mobile device.
- *Map Viewer* – View the location of your plants on different maps.
- *Store Management* – Prepare seed catalogues and manage orders.
- *Index Seminum* – On-line seed catalogue.
- *Garden herbarium* - record preserved material alongside your living collection.
- *Data import*

Architecture and requirements

IrisBG is a multi-user system that runs on Windows XP, Windows Vista and Windows 7. The system is built with Microsoft .NET and uses relational databases (SQL) for data storage. The current version is supported and tested for the databases Microsoft SQL Server, MySQL. Support for other databases upon request.

System Management

- Manages Information about institutions and collections, accession numbering policy, accession format, garden map coordinates etc.
- Update information about the locations in the garden with a flexible hierarchical model which allows you to subdivide your garden into as many or as few levels as you require.
- Manages a complete list of all your contacts with all the necessary contact details such as name, address, email, etc.
- Each contact can be assigned multiple roles of your own choosing.
- Mailing labels for contacts can be printed.
- Manages a complete list of all your personnel with name, address, email etc.

“IrisBG provides great flexibility and has been able to solve distinct needs in plant record management for our garden.”

Heidi Lie Andersen, Scientific director, The Arboretum and Botanical Garden, University of Bergen, Norway

System Definitions

- User defined codes are used throughout the system to give you maximum flexibility to adapt the system to your requirements.

Authorization

- All users must have a user account. The account defines the access privileges to different parts of the system through user roles defined by the system administrator.

For more information

Visit us at www.irisbg.com

info@irisbg.com

+44 (0)1761 479350

Botanical Software Ltd

9 Priston, Bath, BA2 9EB, UK