

# Map Viewer

## Product Sheet



### Overview

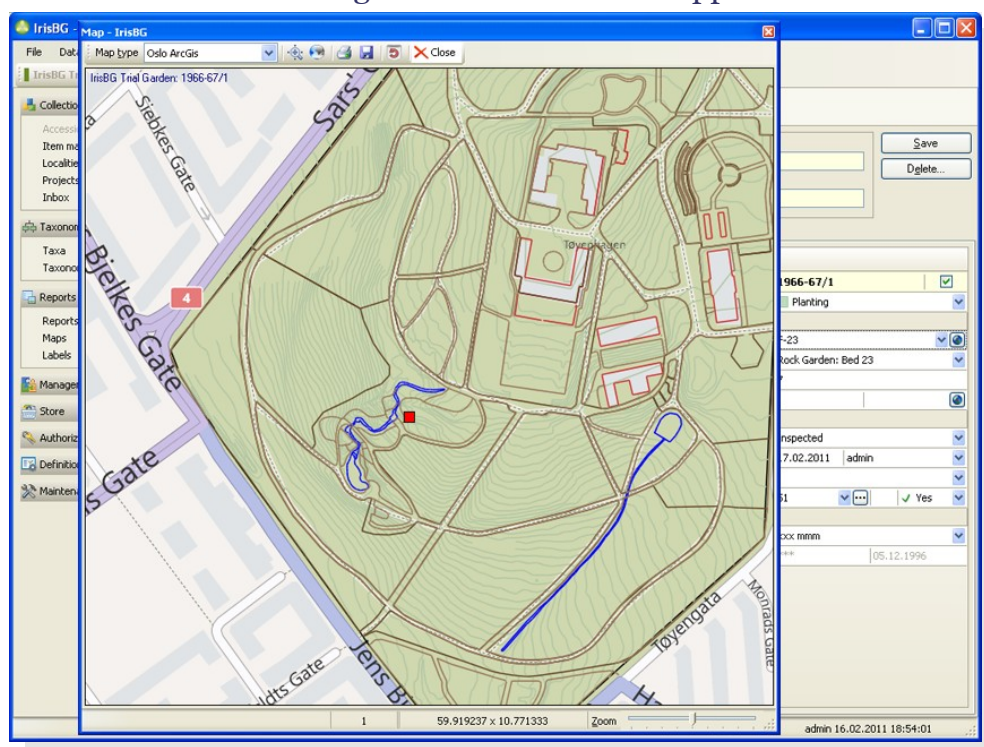
The *Map Viewer* module provides you with the functionality needed to display maps and visually update map coordinates in your botanical collection. The maps can be used to show and update the location of accessions, areas in the garden or localities from where the accession originates.

### User experience

- Produce a choice of different maps from your own selection criteria in a similar manner to the standard reports.
- Open a map and display the location of the accession item or garden location (i.e. bed) from the Accession item screen.
- Display a map of the locality of origin directly from the Accession screen.
- Choose between your own maps and a wide range of internet map service providers, including Google maps, Bing maps, Open Street map, etc.
- Change the recorded location coordinates for an accession, garden location or locality, by visually dragging the map marker directly in the map to the desired position.
- Details about each marker on the map are displayed by placing the mouse pointer over the marker.
- In addition to zooming and panning, you can also print, save and copy the map image.
- Select between different marker types.

### Technical features

- Your own maps are accessed via a Web Map Service (WMS) tile server.
- You can define up to 9 different WMS map providers, in addition to the predefined standard map providers.
- If you do not have your own WMS service, the “IrisBG Map Server” can be used. The “IrisBG Map Server” supports Esri Shapefiles and PostGIS databases. Other file formats, such as AutoCAD and Vectorworks are supported by converting the map data to the Shapefile format.
- From the different services you may also switch between display styles, including traditional map display, terrain, satellite, hybrid etc.
- A range of coordinate formats and geodetic datums are supported.



### Architecture and requirements

The *Map Viewer* module is using WMS tile servers and internet based map service providers to display the maps, and will require a connection to the internet.

### For more information

Visit us at [www.irisbg.com](http://www.irisbg.com)  
info@irisbg.com  
+44 (0)1761 479350  
Botanical Software Ltd  
9 Priston, Bath, BA2 9EB, UK