

Iris Mobile

Product Sheet



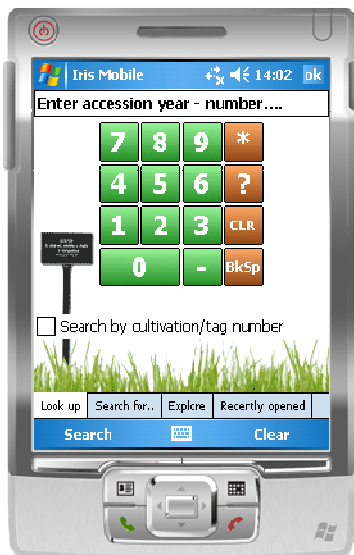
Iris - Botanical Garden
Professional Botanical Software

Overview

Iris Mobile is an application made to view and update your plant collection on a portable device.

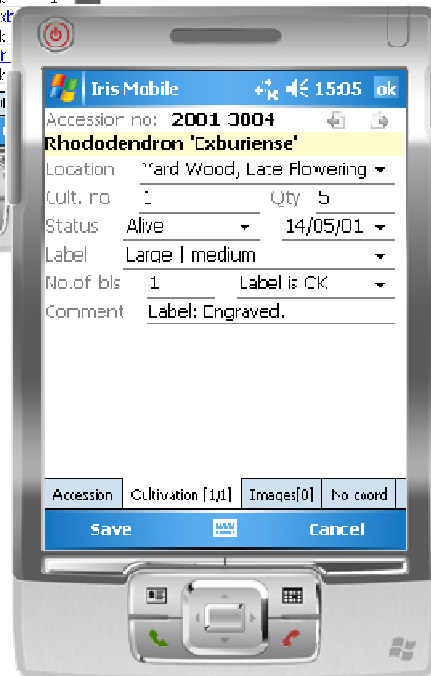
Features

- The device is synchronized with your Iris desktop version. Changes to the Iris database made on the device are available in a separate log.
- Core data can be retrieved and viewed for a given accession or cultivation.
- An accession can be found based on accession number, cultivation number, name, location, family and/or genus.
- Cultivation details such as cultivation status, label type, label status, comments etc. can be updated.
- Photographs of a cultivation can be taken with the device and added directly to the database.
- A complete log of the recently opened accessions is available in the history log on the device.



Technical Features

- Dynamic screen size adjustment (portrait, landscape).
- Compatible with touch screen and/or keyboard enabled devices.
- Camera integration (where available).
- Can be synchronized with your Iris database by connecting a USB cable between the device and a desktop version of Iris. The synchronization process supports auditing before changes are committed to the database.



Device requirements

Iris Mobile can run on most devices running Windows Mobile.

- Windows Mobile 5 or newer with touch screen. *Windows Mobile 6 or later recommended.*
- A range of screen resolutions and page orientation is supported. *Portrait VGA or WVGA is recommended.*

For more information

Visit us at www.irisbg.com

info@irisbg.com

+44 (0)1761 479350

Botanical Software Ltd

9 Priston, Bath, BA2 9EB, UK